

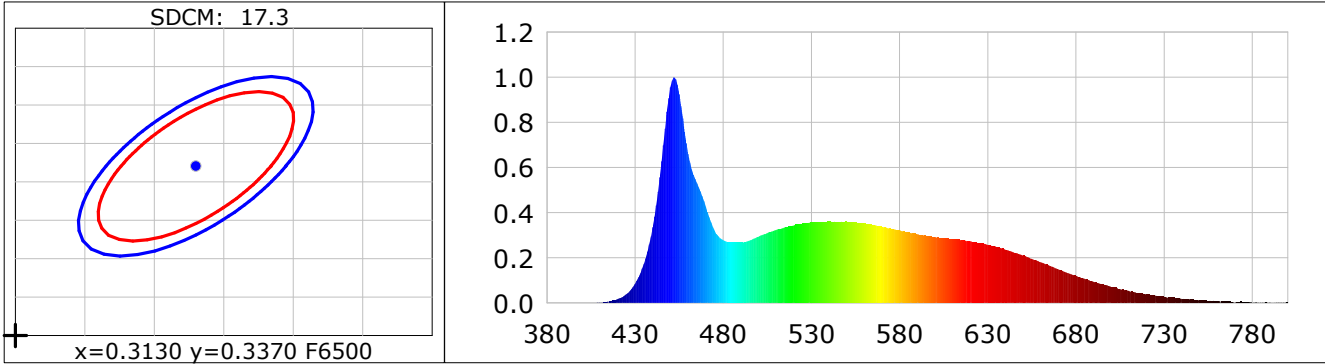
Lightsource Test Report

Product Infomation

| | |
|-------------------------------|-------------------------|
| Product Category: LED STRIP | Product Type: LED STRIP |
| Product Spec: FOOD 5 | Product Number: 437 |
| Manufacturer: TECSOLELED S.L. | Buyer: TECSOLELED S.L. |

CIE Colorimetric Parameters

Chromaticity coordinates: $x=0.2960$ $y=0.3033$ $u(u')=0.1957$ $v=0.3009$ $v'=0.4514$
 CCT: $T_c=7978K$ ($duv=-0.00122$) Color Ratio: $R=0.142$ $G=0.785$ $B=0.073$
 Peak Wavelength: 452.1nm Half Bandwidth: 23.7nm
 Dominant Wavelength: 480.4nm Color Purity: 0.153
 CRI: $R_a=93.0$, $avgR(1\sim14)=90.0$, $avgR(1\sim15)=90.3$ TM30: $R_f=88$, $R_g=97$
 GAI: $GAI_BB_8=98.2$, $GAI_BB_15=102.4$, $GAI_EES=100.3$
 R1 =94 R2 =96 R3 =93 R4 =92 R5 =92 R6 =89 R7 =95 R8 =92
 R9 =79 R10=89 R11=92 R12=63 R13=97 R14=96 R15=95
 Color Quality Scale: $Q_a=88.4$, $Q_f=87.6$, $Q_p=90.0$, $Q_g=97.7$
 Q1 =91 Q2 =99 Q3 =83 Q4 =76 Q5 =82 Q6 =87 Q7 =94 Q8 =96
 Q9 =96 Q10=92 Q11=89 Q12=89 Q13=91 Q14=92 Q15=93



Photometric Parameters

| | | |
|----------------------------------|---|------------------------|
| Luminous Flux: 1475.6 lm | Efficiency: 101.99 lm/W | Radiant Power: 5.398 W |
| Total mains efficacy: 94.44 lm/W | Energy Efficiency Class: F (EU 2019/2015) | |

Electric Parameters

| | | |
|----------------------|-------------------|---------------|
| Voltage: 24.000V | Current: 0.6029A | Power: 14.47W |
| Power Factor: 1.0000 | Frequency: 0.00Hz | |

Test Infomation

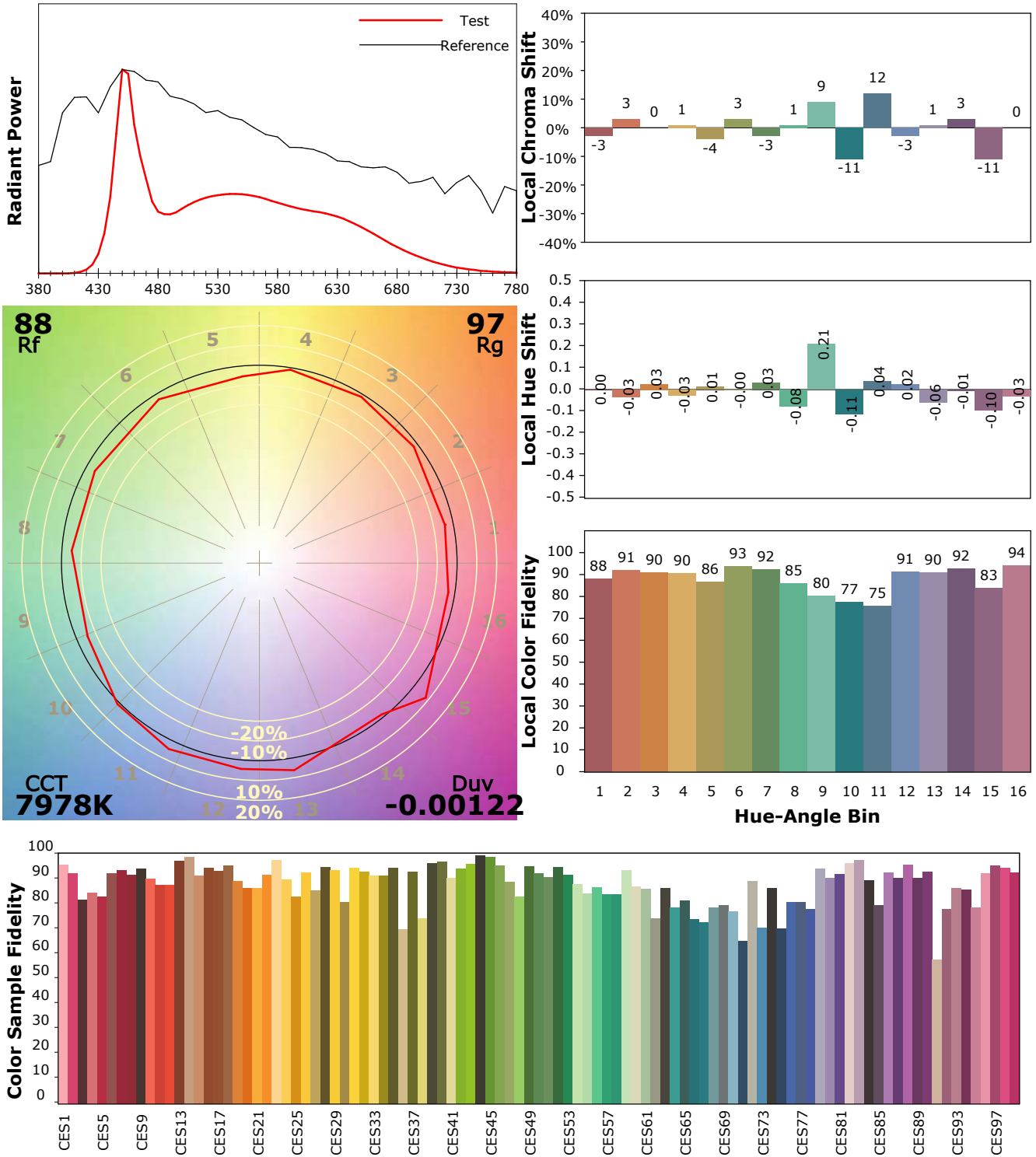
| | |
|---|--|
| Scan Range: 380~800:1nm | Photometric Method: sphere-spectroradiometer |
| Stabilization Time: 0 Sec ALC.: 1.0000 | Photometric Condition: Sphere diameter: 1.50m, 4PI |
| Max of Signal: 46798 (2119) | CCD Integration Time: 185.03 ms |

IES TM-30-18 Color Rendition Report

Product Information

Product Category: LED STRIP
 Product Spec: FOOD 5
 Manufacturer: TECSOLED S.L.

Product Type: LED STRIP
 Product Number: 437
 Buyer: TECSOLED S.L.



Condition: Tx:20.0°C, Ti:17.8°C, R.H.:60%
 Test Lab: TECSOLED S.L.
 Operator: JORDAN GIL DIAZ

Test Device: Inventfine CMS-2S (Plus)
 Test Time: 2021-11-09 15:45:16
 Inspector: